



Data sheet

Contec.greenlight on top

Version February 2025





Table of contents

Technical data Contec.greenlight on top 3 - 7

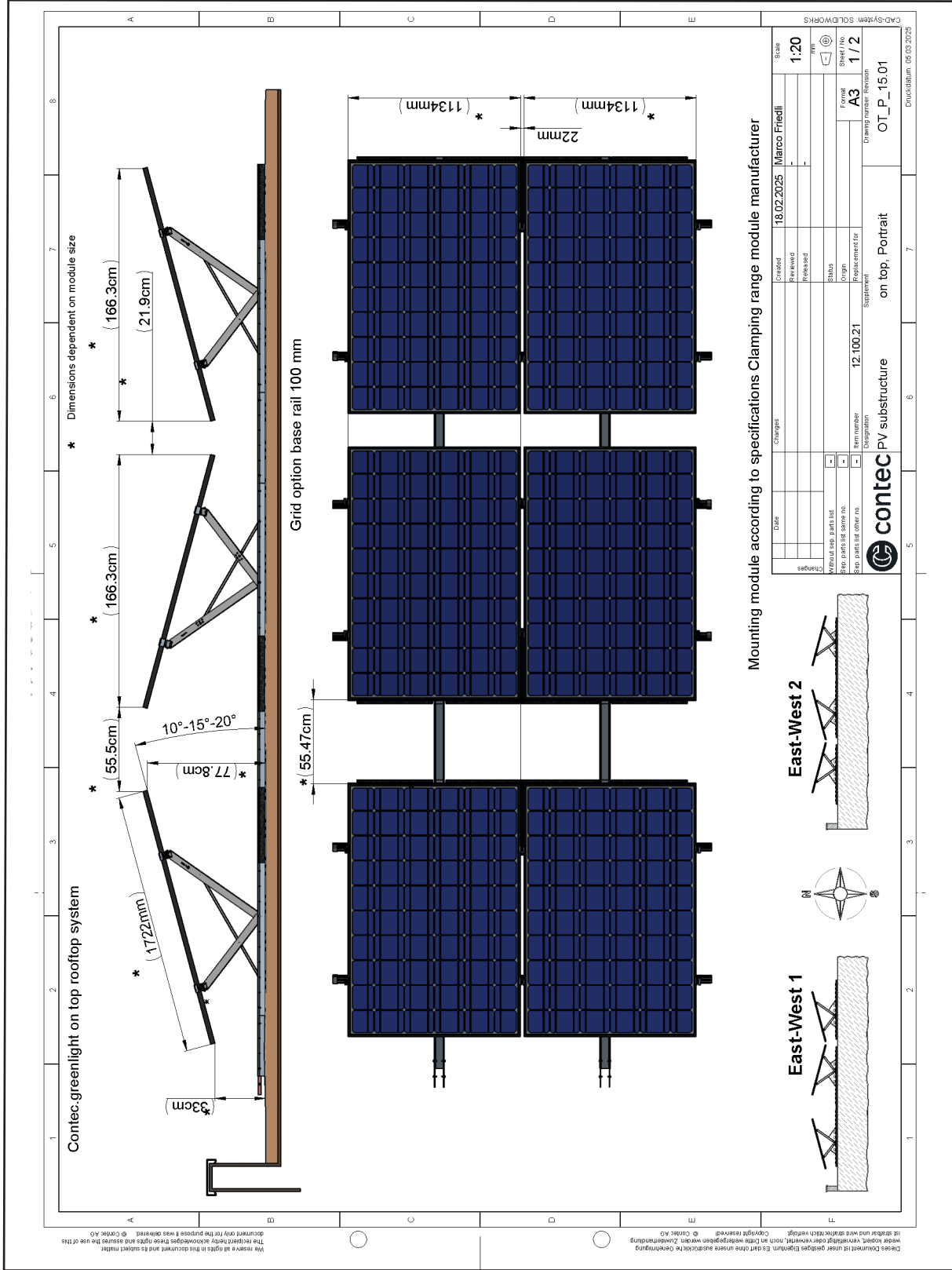
Factsheet Contec.greenlight on top..... 8 - 9

Technical data

Contec.greenlight on top	Dimension per PV module
Weight per unit	9.3 kg, weight without ballast, without PV module (landscape)
Material	Magnelis, aluminum, stainless steel, galvanized steel
Standard module inclination	10°, 15° or 20° standard (freely adjustable)
Alignment	Inclination adjustable (East/West, South / Landscape, Portrait)
Roof connection	No constructive roof connection necessary, system is placed on the green roof/gravel roof.
Ballasting	Load and distance between substructure (distances between Knickfix base profile) must be calculated by Contec AG according to the wind zone plan.
Roof pitch	Inclination up to 5° approved. From 5°: Approval only with technical clarification from Contec AG.
Unit consists of	<p>Landscape: 1 x ~1.5 m Base rail 1 x ~3.5 m Profile rail</p> <p>Portrait: 1 x ~2.1 m Base rail 1 x ~2.2 m Profile rail</p> <p>Universell: 1 x Knickfix 1 x Fixed strut Small items (screws, L-shaped profile connectors, Base rail connectors, module clamps)</p>
Ballasting unit	Garden slabs 50 cm x 50 cm (not included in the scope of delivery)
Warranty	10 years system warranty on Contec.greenlight on top substructure ex works, valid from date of delivery.

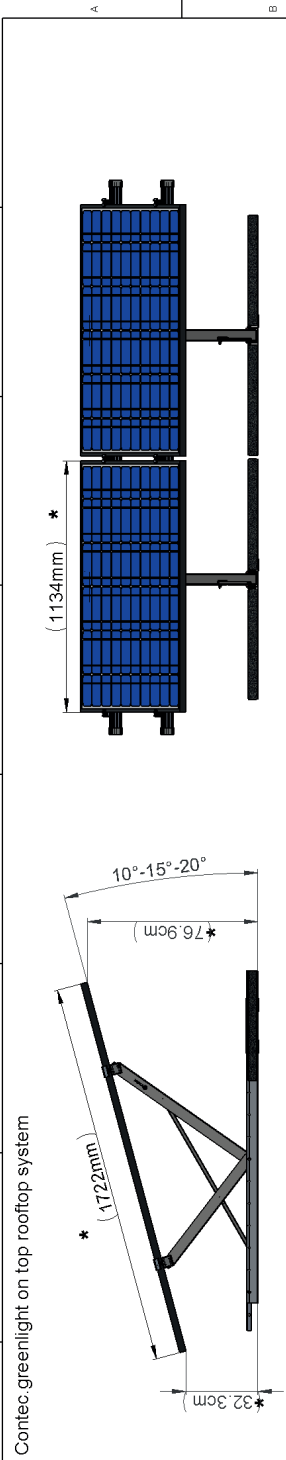
Technical data

Contec.greenlight on top portrait east-west

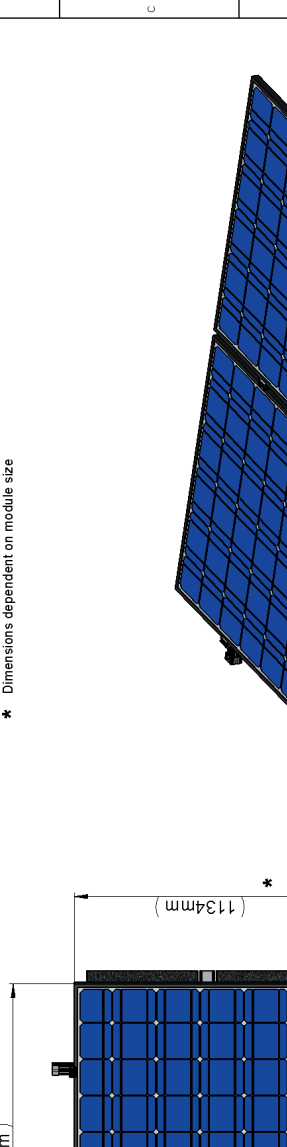


Technical data

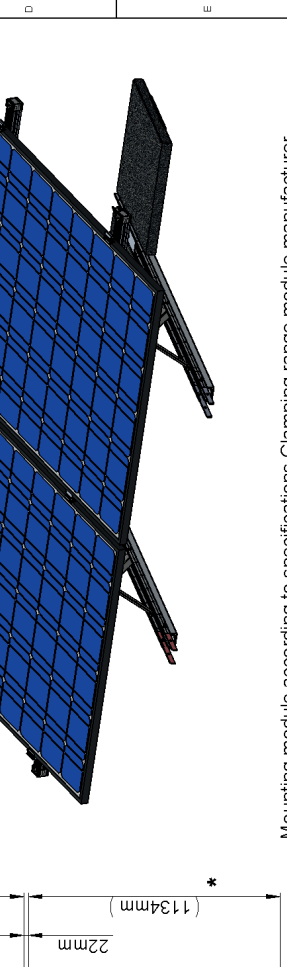
Contec.greenlight on top portrait south



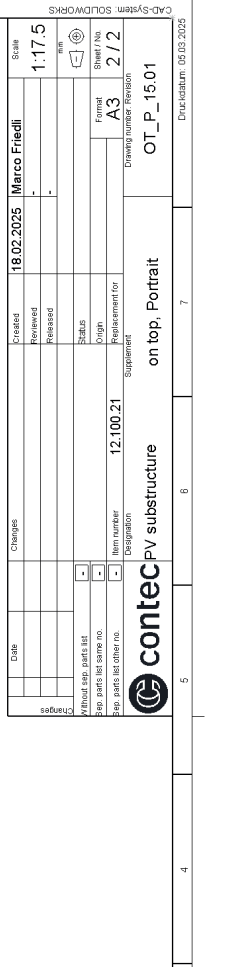
Contec.greenlight on top rooftop system



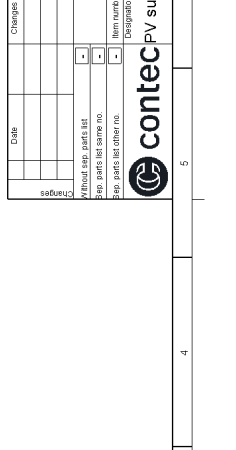
Mounting module according to specifications Clamping range module manufacturer



* Dimensions dependent on module size



South



* Dimensions dependent on module size

contec PV substructure on top, Portrait

Item number: 12.100.21

Disaggregation: Supplement

Scale: 1:17.5

Sheet no: 2/2

Project: Marco Friedli

Scale: 1:17.5

Author: A3

Revision: 2/2

Drawing name: Revision

OT_P_15.01

Drawing date: 05.03.2025

Date	Changes	Created	Reviewed	Released
		18.02.2025	Marco Friedli	

Without sep. parts list

Sep. parts list same no.

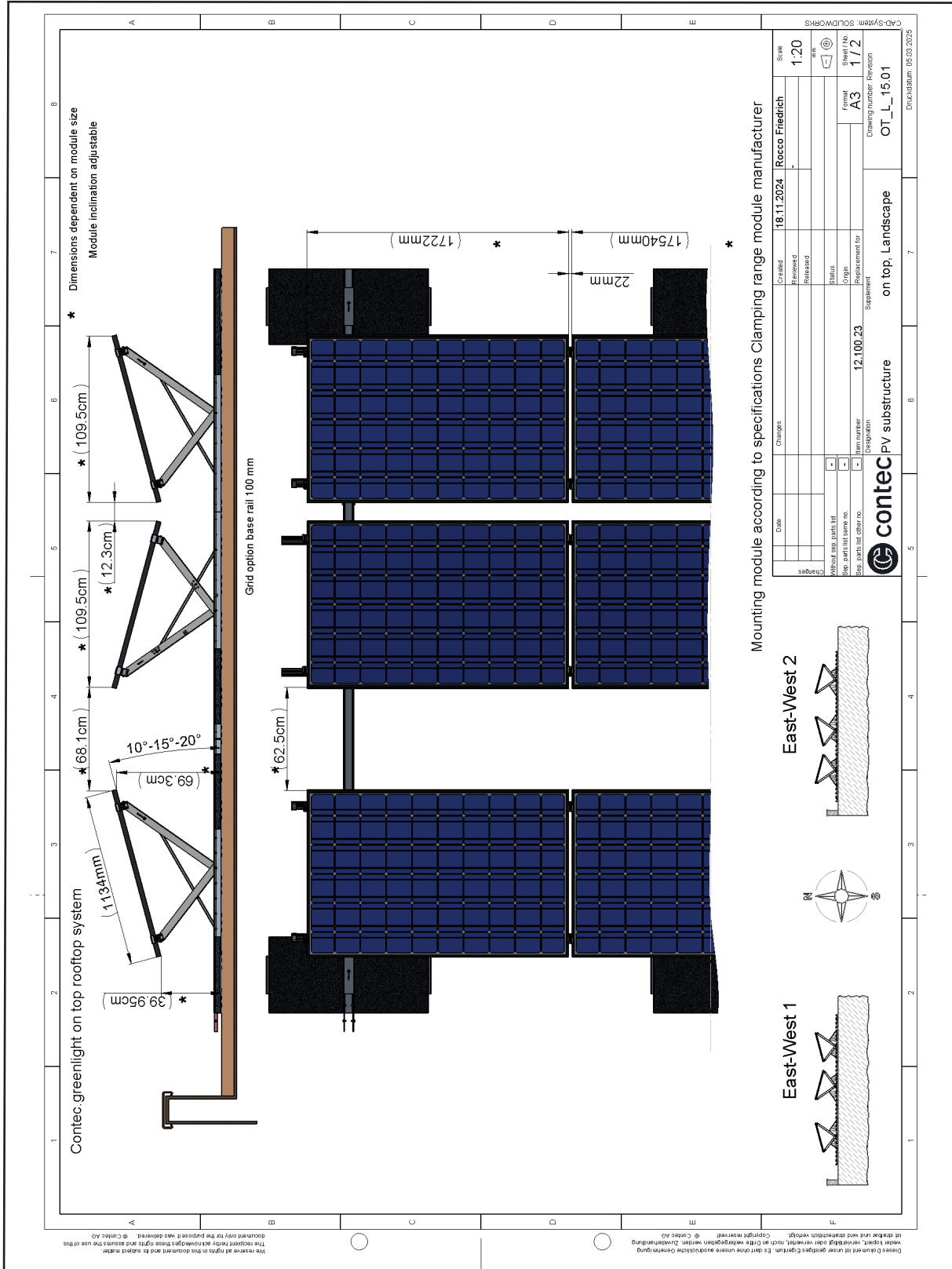
Sep. parts list other no.

Item number: 12.100.21

Disaggregation: Supplement

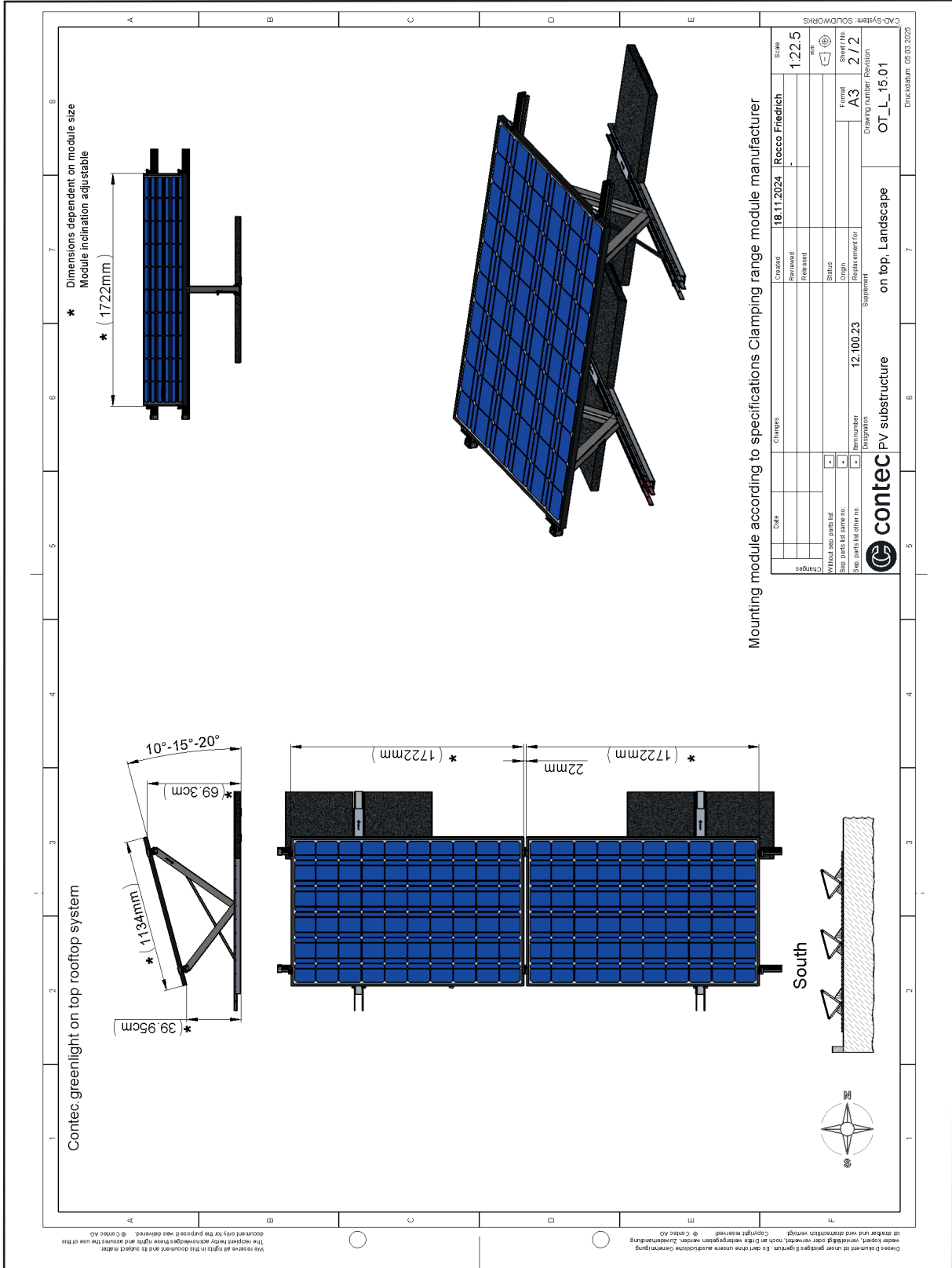
Technical data

Contec.greenlight on top landscape east-west



Technical data

Contec.greenlight on top landscape south



Factsheet

Contec.greenlight on top

Important tips for a well-functioning EnergyGreenRoof

- The Contec.greenlight on top system is designed for existing green roofs or gravel roofs.
- The development of the greenery must be observed well in the first year after the installation of the PV system and measures must be taken if necessary.
- The substrate layer structure should be as level/parallel to the roof deck as possible (level out if necessary).
- Before installation, the installation instructions as well as the installation notes must be observed.
- Observe ballasting / ballast weights according to plan.
- A special seed mixture must be used for the EnergyGreenRoof (low-growing).
- At least 2 - 4 maintenance passes per year are necessary for the EnergyGreenRoof..
- When maintaining the green roof, ensure that no damage occurs to the PV systems.
- High-growing plants must be removed manually or with suitable equipment (no string mowers, as these could damage the power cables and contaminate the PV panels).
- Fall protection must be planned in accordance to the guidelines.

Advantages of Contec.greenlight on top

- Can be used on existing green and gravel roofs.
- Low additional weight due to surface compound of the PV system weight per unit area max. $\sim 45 \text{ kg/m}^2$ (including PV module, ballast and substrate construction)
- No loss of yield due to shading of plants (module height lower edge min. 30 cm from substrate)
- Ecological added value through high biodiversity of the flat roof thanks to the combination of PV and greening
- Quick and easy installation
- No accumulation of heat under the panels; for every 1°C cooler PV module, the additional output increases by 0.35 - 0.45
- No roof penetration
- Simple integration of fall protection
- Optimal use of roof area
- Easy maintenance of the planting, control and cleaning thanks to increased installation -> approx. 50 % less maintenance than with flat modules on vegetation
- Snow slides off quickly

Factsheet

Contec.greenlight on top

Service Contec

We create

- Occupancy planning based on a proposal
- Substructure plan
- Installation plan incl. load calculation

The planning of the fall protection system Contec.safe is taken into consideration

On the roof

- Installation of the substructure and guardrails incl. acceptance test
- Seeding with suitable seeds
- Visual inspection of the PV system
- Annual roof maintenance according to checklist
 - Maintenance of greenery
 - Inspection of guardrails
 - Inspection of plumbing work and connections
 - Cleaning of PV panel

