



Data sheet

Contec.greenlight on top

Version February 2024



Table of contents

Technical data Contec.greenlight on top	3 - 7
Factsheet Contec.greenlight on top.....	8 - 9

Technical data

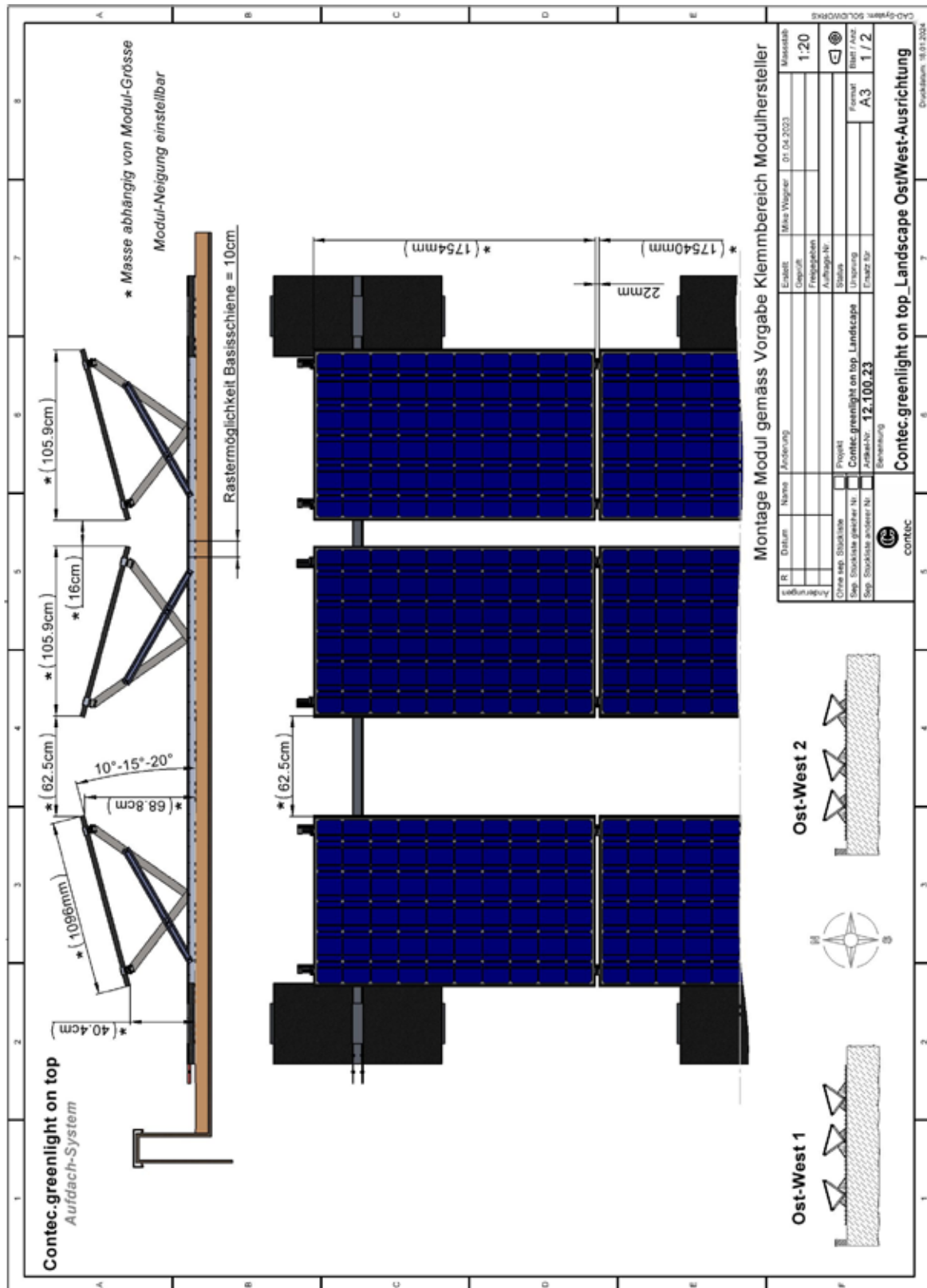
Contec.greenlight on top

Flat roof mounting system: Contec.greenlight on top

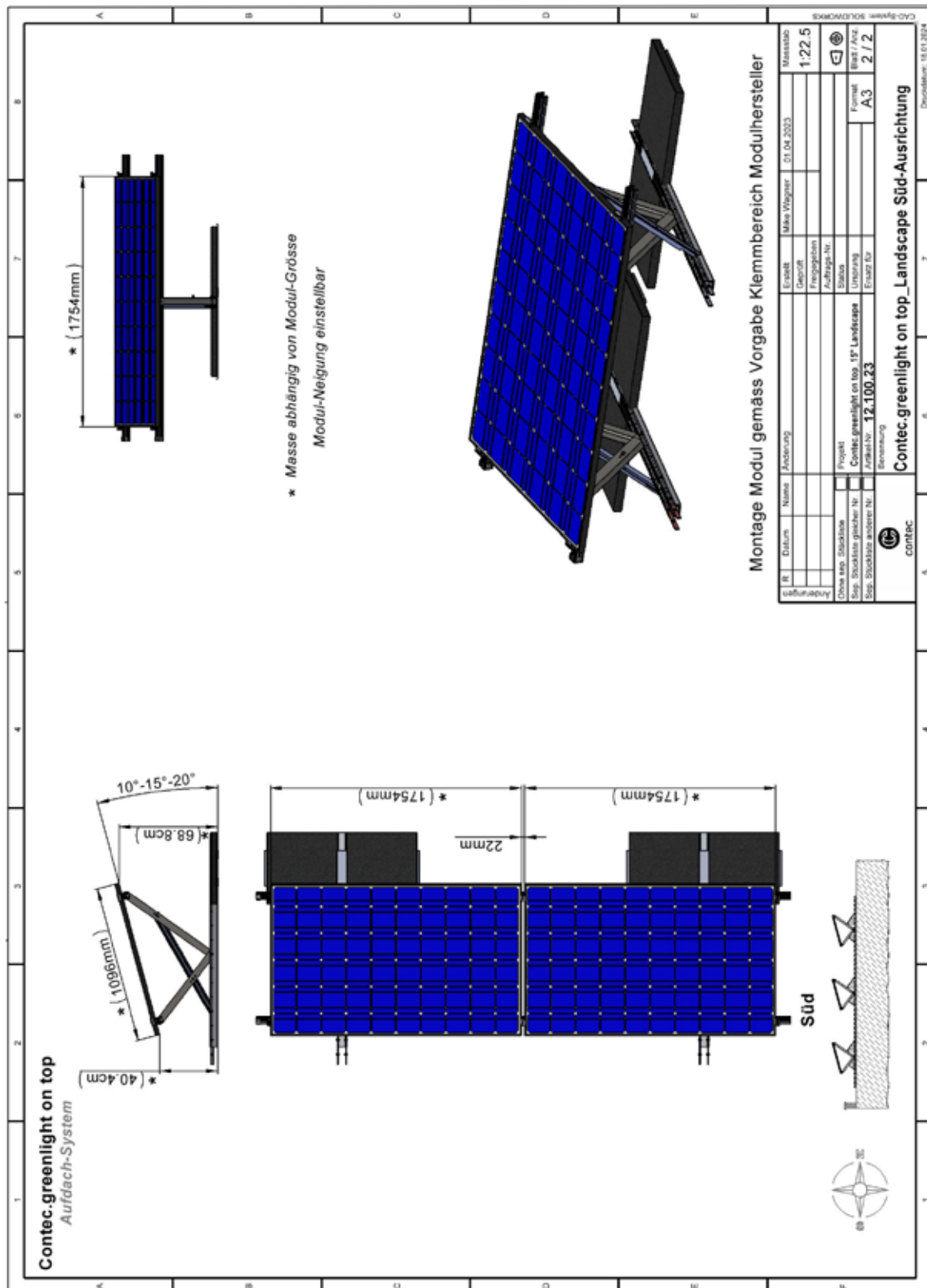
Contec.greenlight on top	Dimension per PV module
Weight per unit	9.3 kg, weight without ballast, without PV module (landscape)
Material	Magnelis, aluminum, stainless steel, galvanized steel
Standard module inclination	10°, 15° or 20° standard, freely adjustable
Alignment	Inclination adjustable (East/West, South / Landscape, Portrait)
Roof connection	No constructive roof connection necessary, system is placed on the green roof/gravel roof.
Ballasting	Load and distance between substructure (distances between Knickfix base profile) must be calculated by Contec AG according to the wind zone plan.
Roof pitch	Slope up to 5° approved, above 5° approved only with technical clarification by Contec AG.
Unit consists of	1 x Knickfix 1 x fix brace 1 x ~1.5 m Landscape base rail / ~2.1 m Portrait base rail 1 x ~3.5 m Landscape profile rail / ~2.2 m Portrait profile rail small material (screws, profile connector L-shaped, connector base rail, module clamps)
Ballasting unit	2 - 4 pcs. Garden slabs 2 x ≥ 21 kg/pc. (are not included in the scope of delivery)
Warranty	10 years system warranty on Contec.greenlight on top substructure ex works, valid from date of delivery.

Technical data

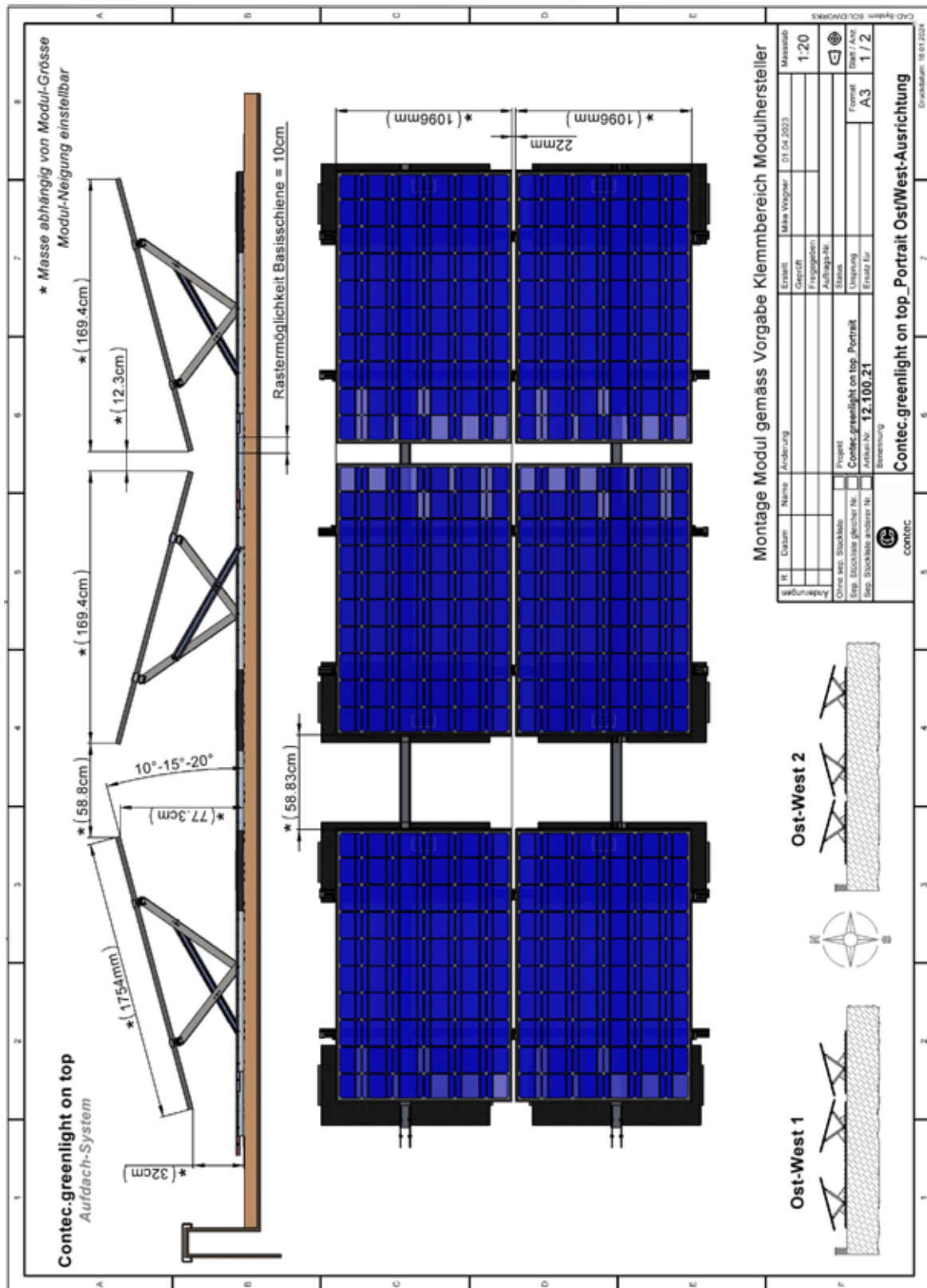
Contec.greenlight on top Landscape O/W



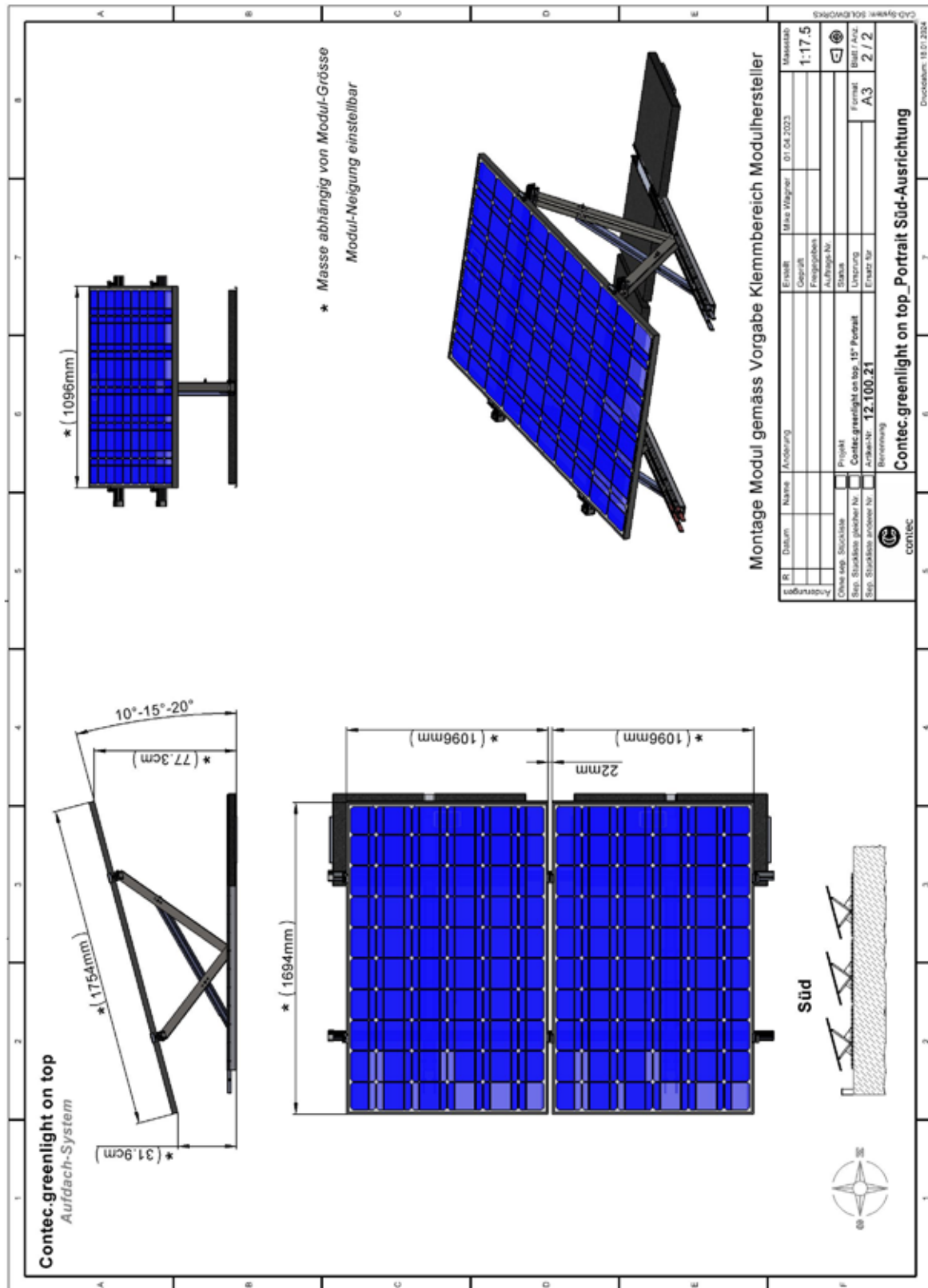
Technical data
Contec.greenlight on top Landscape South



Technical data
Contec.greenlight on top Portrait O/W



Technical data
Contec.greenlight on top Portrait South



Factsheet

Contec.greenlight on top

Important tips for a well-functioning EnergyGreenRoof

- The Contec.greenlight on top system is designed for existing green roofs or gravel roofs.
- The development of the greenery must be observed well in the first year after the installation of the PV system and measures must be taken if necessary.
- The substrate layer structure should be as level/parallel to the roof deck as possible (level out if necessary).
- Before installation, the installation instructions as well as the installation notes must be observed.
- Observe ballasting / ballast weights according to plan.
- A special seed mixture must be used for the EnergyGreenRoof (low-growing).
- At least 2 - 4 maintenance passes per year are necessary for the EnergyGreenRoof..
- When maintaining the green roof, ensure that no damage occurs to the PV systems.
- High-growing plants must be removed manually or with suitable equipment (no string mowers, as these could damage the power cables and contaminate the PV panels).
- Fall protection must be planned in accordance with the guidelines.

Advantages of Contec.greenlight on top

- Can be used on existing green and gravel roofs.
- Low additional weight due to surface compound of the PV system Weight per unit area max. $\sim 45 \text{ kg/m}^2$ (including PV module, ballast and substrate construction).
- No loss of yield due to shading of plants (module height lower edge min. 30 cm from substrate).
- Ecological added value through high biodiversity of the flat roof thanks to the combination of PV and greening.
- Quick and easy installation
- No accumulation of heat under the panels; for every 1°C cooler PV module, the additional output increases by 0.35 - 0.45.
- No roof penetration
- Simple integration of fall protection
- Optimal use of roof area
- Easy maintenance of the planting, control and cleaning thanks to increased installation -> approx. 50 % less maintenance than with flat modules on vegetation
- Snow slides off quickly

Factsheet

Contec.greenlight on top

Service Contec

We create

- Occupancy planning based on a proposal
- Substructure plan
- Installation plan incl. load calculation

The planning of the fall protection system Contec.safe is taken into consideration

On the roof

- Installation of the substructure and guardrails incl. acceptance test
- Seeding with suitable seeds
- Visual inspection of the PV system
- Annual roof maintenance according to checklist
 - Maintenance of greenery
 - Inspection of guardrails
 - Inspection of plumbing work and connections
 - Cleaning of PV panel

