

## Data sheet

### Contec.greenlight on top 45° - 90°

11 / 05 / 2026



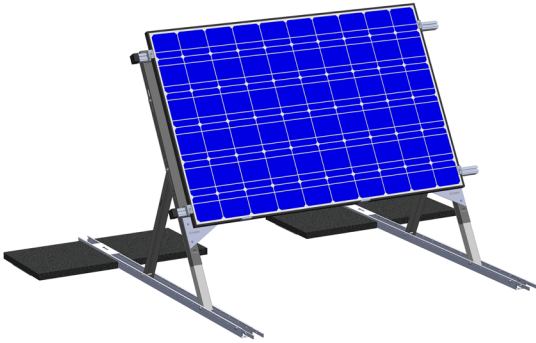
#### Technical data

Standard module inclination	Adjustable to 45°, 60°, 75° and 90°
Weight per unit	9.3 kg, weight without ballast, without PV module
Material	Magnelis, aluminium, stainless steel, galvanized steel
Alignment	East/west or south only available for landscape and bifacial configurations
Roof connection	No constructive roof connection necessary, system is placed on the green roof/gravel roof.
Roof pitch	Inclination up to 5° approved From 5°: Approval only with technical clarification from Contec AG.
Unit consists of	Base rail > Standard lengths 3 m, 4.5 m and 6 m Support profile Support brace Sliding profile Profile rail > Standard lengths 6.1 m and 3.3 m Small items > Anti-slip protection, L-shaped profile holder, profile connector, base rail connector, module clamps, screws, sleeves
Permitted clamping zone	Landscape Landscape bifacial
Permitted clamps	Schletter clamps S:Flex clamps AK Klick
Required substructures	Number of substructures = Number of modules + number of rows
Level out uneven surfaces	Unevenness of up to 12 cm can be levelled out

## Technical data

Module height (lower edge)	Standard 42 cm Raised 75 cm Raised 90 cm
Weight specifications for planning	Weight / m <sup>2</sup> system without modules Weight / m <sup>2</sup> system with modules and ballasting Weight / m linear load on base rail
Ballasting unit	One ballasting unit (top and bottom) covered with garden slabs as per the plan (50 cm x 50 cm x 4 cm weighing 21 kg each)
Max. length of module row	24 m
Max. length of base rails	24 m
Planning	System planning for Contec.greenlight on top 45°–90° is carried out by Contec AG
Lightning protection	Can be connected to Contec.greenlight on top 45°–90°
Equipotential bonding	Provided by Schletter clamps
Warranty	10 years system warranty on Contec.greenlight on top substructure ex works, valid from date of delivery.

## Installation options



### Landscape clamping

Profile rail running parallel to the long edge, continuous beneath the module

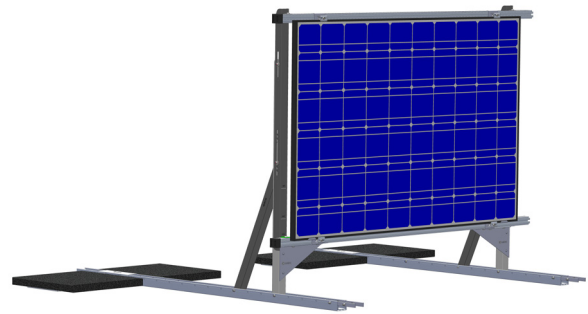
Bottom edge of module to centre of profile rail: 110 mm

Module clamping on short module edge

End and mid clamps required for fixation

2 x anti-slip protections  
Modules carry the module weight

Bifacial modules: reduced yield due to shading from profile rail



### Bifacial clamping

Profile rail running parallel to the long edge, continuous beneath the frame

Module edge to centre of profile rail: 8 mm

Module clamping on long module edge

Only end clamps required for fixation

2 x anti-slip protections  
Modules carry the module weight

Bifacial modules: maximum possible yield, as there is no shading on the module

## Module inclinations 45° - 90°

